

ComTrader Technical Requirements

Table of Contents

1	Technical Requirements to run ComTrader	1
1.1	Client PC	1
1.2	Proxyserver, Connection restrictions, URLs	2
1.3	SSL Security	4
2	Check infrastructure (using EPEX as example)	5
2.1	Test Java Plugin.....	5
2.2	Java Plugin Settings	5
2.3	Test Software Download	9
2.4	Test SSL connection to backend	9
2.4.1	Certificate verification.....	10
3	Troubleshooting	13

1 Technical Requirements to run ComTrader

1.1 Client PC

To run the ComTrader application a Windows PC is required with at least 1 Gigabyte Memory and a processor that runs with not less than 1 GHz. As operating systems Windows 2000, Windows XP, Windows Vista and Windows 7 are supported.

The Client PC must have a suitable internet connection with at least Dual ISDN (128 kbit). DSL or higher is recommended. The connection to the backend can be done directly, over a proxy server (with or without authentication) or over a leased line (dedicated network connection to the backend network).

The ComTrader needs a Java Plugin (JRE) with version 1.6.O_14 or higher (Java 1.7 is supported too). Furthermore the end-user of ComTrader needs access rights to the Java Plugin (e.g. Plugin cache).

To access the initial website an internet browser is required. The browser must support the Java Plugin.

1.2 Proxyserver, Connection restrictions, URLs

The ComTrader application connects via https protocol to WebGATE which provides access to the backend systems. If the access to the internet is restricted (e.g. by firewalls or specific proxy restrictions), the subsequent listed URLs must be unlocked.

The ComTrader will be started via the following web sites:

Power Market EPEX

Environment	ComTrader Download URL
Production	http://comtrader-prod.epexspot.com
Simulation	http://comtrader-simu.epexspot.com
DST	http://comtrader-dst.epexspot.com
Customer Test	http://comtrader-cute.epexspot.com

Power Market SOUTHPOOL

Environment	ComTrader Download URL
Production	http://comtrader-prod.bsp-southpool.com
Simulation	http://comtrader-simu.bsp-southpool.com
DSTP	http://comtrader-southpooldst.epexspot.com

Gas Market

Environment	ComTrader Download URL
Production	http://commodity-trading.eex.com
Simulation	http://commodity-trading-simu.eex.com
Customer Test	http://commodity-trading-cute.eex.com
Advanced Simu	http://commodity-trading-advsimu.eex.com

During the program start process the WebStart mechanism does a version check and if necessary the most actual version of the file "comtrader.jar" will be downloaded.

The size of this file may change in the future (e.g. by updates). Please make sure that the download of this file is not restricted by size limitations for zip or jar archives in your infrastructure. Furthermore please make sure that the jar archive is not changed by any virus scanner.

The running ComTrader connects to the backend systems via the following URLs:

Power Market EPEX

Environment	ComTrader Connection URL
Production	https://webgate-ct.deutsche-boerse.com/webgate
Simulation	https://simu-webgate-ct.deutsche-boerse.com/webgate
DSTP	https://dstp-webgate-ct.deutsche-boerse.com/webgate
Customer Test	https://cute-webgate-ct.deutsche-boerse.com/webgate

Power Market SOUTHPOOL

Environment	ComTrader Connection URL
Production	https://webgate-sp.deutsche-boerse.com/webgate
Simulation	https://simu-webgate-sp.deutsche-boerse.com/webgate
DSTP	https://dstp-webgate-sp.deutsche-boerse.com/webgate

Gas Market

Environment	ComTrader Connection URL
Production	https://webgate-energy.deutsche-boerse.com/webgate
Simulation	https://simu-webgate-energy.deutsche-boerse.com/webgate
Customer Test	https://cute-webgate-energy.deutsche-boerse.com/webgate
Advanced Simu	https://adv-simu-webgate-energy.deutsche-boerse.com/webgate

These URLs may change in future releases of ComTrader. Changes might be considered in the infrastructure (e.g. proxy restrictions).

If the access should be established via Leased Lines, the Proxy configuration should contain the mapping of the URLs mentioned above to the following IP addresses:

Power Market

Leased Line Host	Leased Line URL
Host A	https://10.136.5.14/webgate
Host B	https://10.136.133.14/webgate

Gas Markt

Leased Line Host	Leased Line URL
Host A	https:// 10.136.5.10/webgate
Host B	https://10.136.133.10/webgate

1.3 SSL Security

The ComTrader connects to the backend system over a SSL connection (https). To avoid Man-in-the-Middle attacks the SSL certificate must be verified by trusted authorities. This verification requires access to additional URLs, which may be unlocked in the infrastructure. Furthermore the end-user must have rights to accept the certificate.

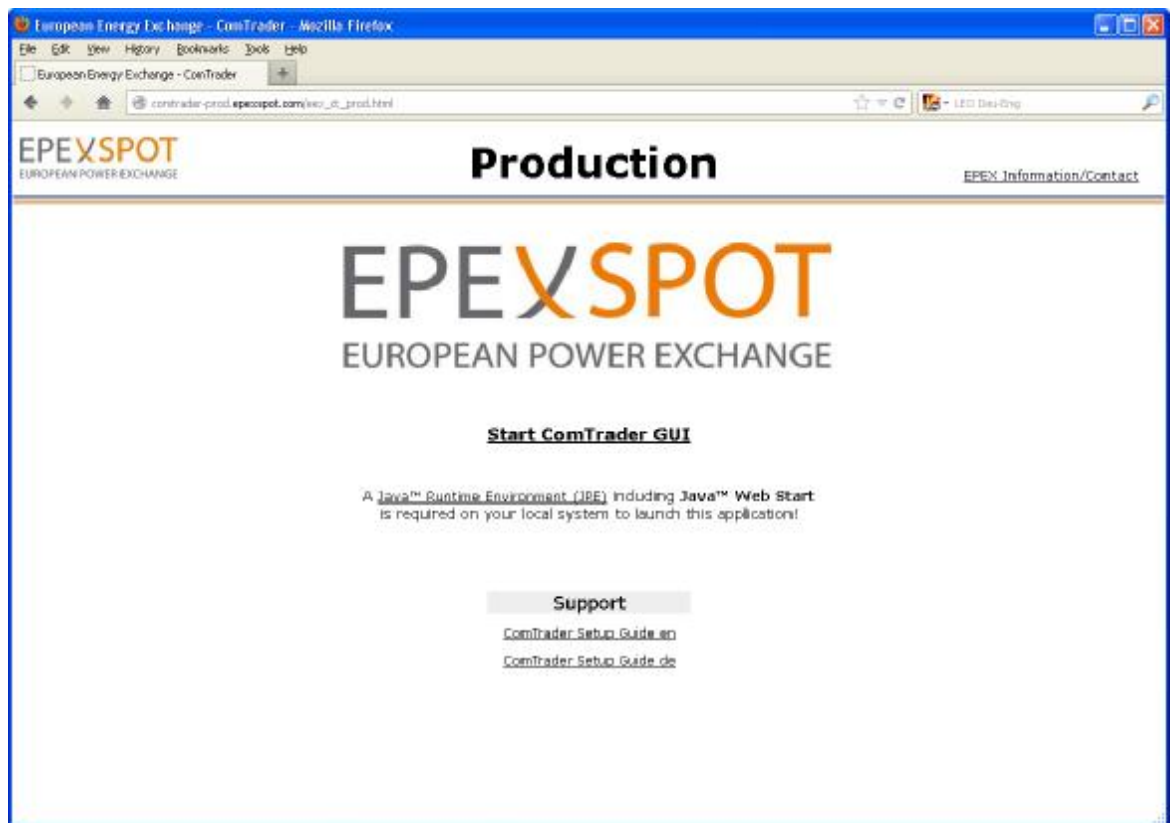
The ComTrader does not support connections with failed certificate verification (like some internet browsers – “Trust the certificate anyway.”).

2 Check infrastructure (using EPEX as example)

2.1 Test Java Plugin

Open the following URL with your internet browser:

http://comtrader-prod.epexspot.com/eex_ct_prod.html



Click the link „Start ComTrader GUI“. If the browser wants to download, show or save a file named “eex_ct.jnlp”, the Java plugin is not configured correctly. Sometimes just the file association .jnlp file - > Java plugin is missing.

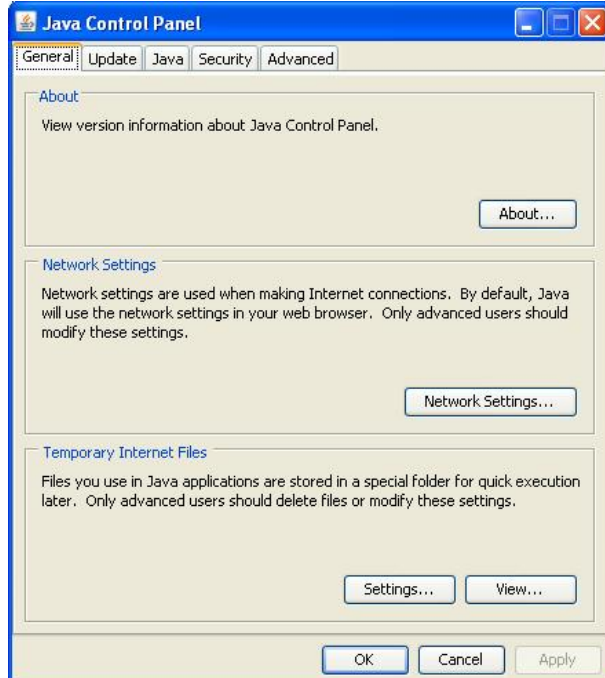
2.2 Java Plugin Settings

Open the Control Panel over Windows start menu:



Double click the icon „Java“ to open the plugin settings. If the icon is missing, the plugin is not or not correctly installed.

The following window should open:

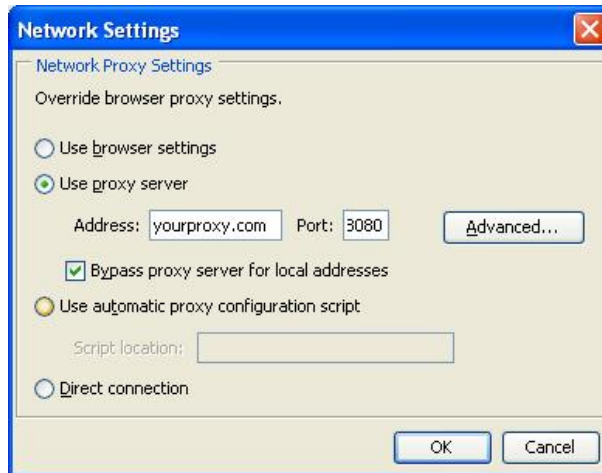


The Java plugin version can be verified with a click on „About...“:



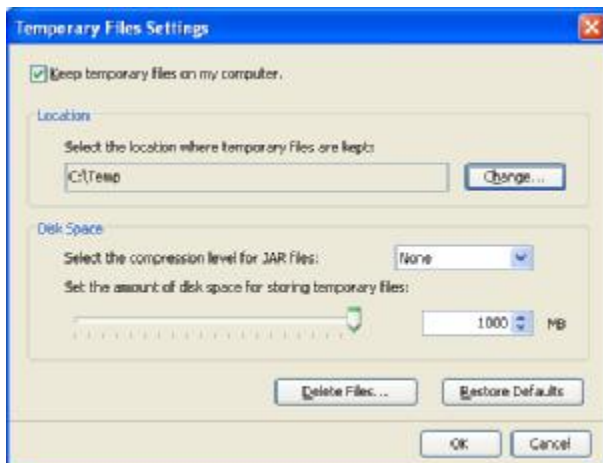
The version should be 1.6.0_14 or higher (Java 1.7 is supported too).

Open the network settings with a click on "Network Settings..."



These settings are specific for your infrastructure. Please ask your system administrator for help. Normally you can use the settings from your internet browser (for Internet Explorer: Tools -> Internet Options => Connections => LAN Settings).

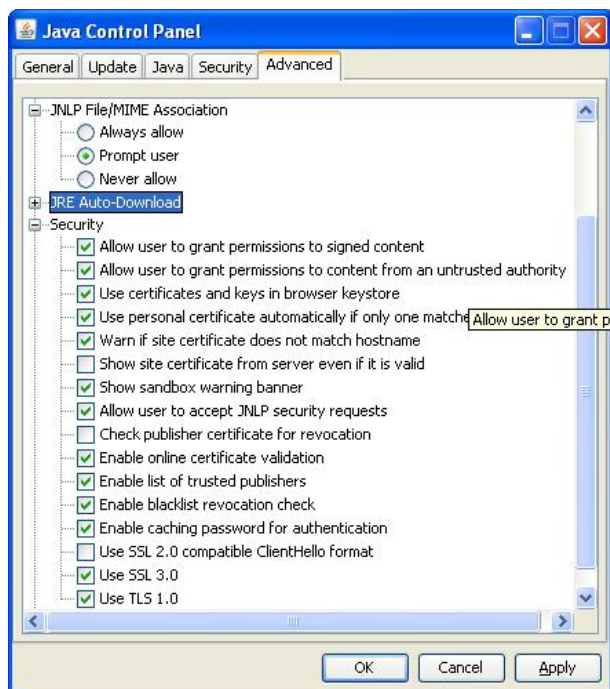
Open the settings for temporary internet files with a click on "Settings..."



We suggest leaving the temporary files on the computer because otherwise the ComTrader application will be downloaded completely with every application start.

The end-user of ComTrader must have read and write access to the temporary files location. If you encounter problems with the download, please try to clear the cache (Button "Delete Files...") and download the application again.

Change the tab to „Advanced“. The following settings are recommended:



2.3 Test Software Download

Enter the following URL to your browser:

<http://comtrader-prod.epexspot.com/lib/comtrader.jar>

The browser should download this file without any error.

2.4 Test SSL connection to backend

Enter the following URL to your browser (screenshots and dialogs are from Internet explorer):

<https://webgate-ct.deutsche-boerse.com/>

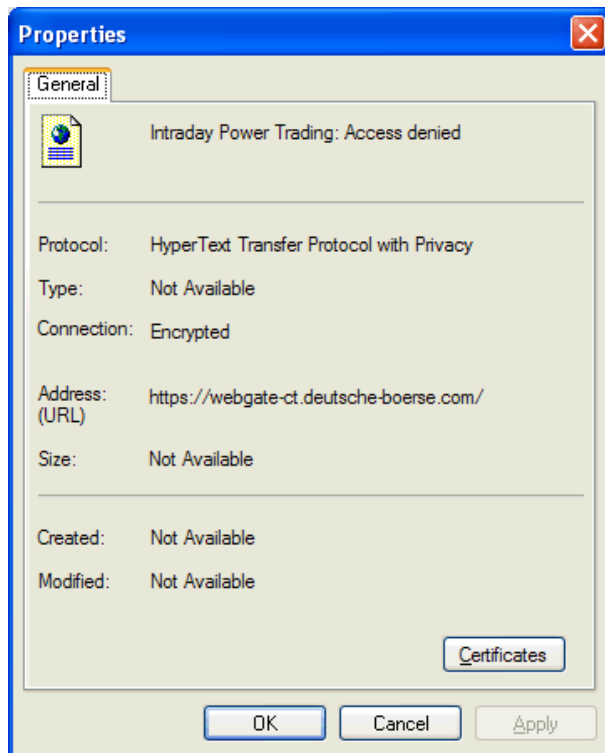
The following site will be displayed:



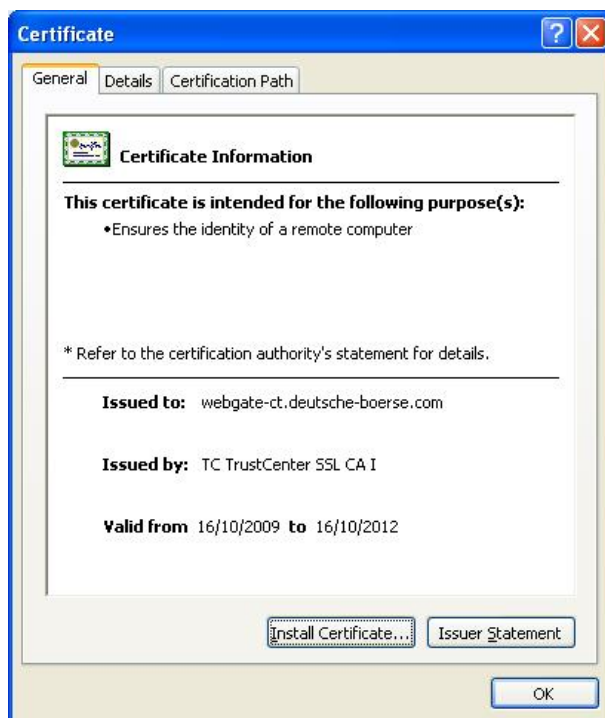
If you don't see this site or get some errors regarding the certificate, please contact your system administrator.

2.4.1 Certificate verification

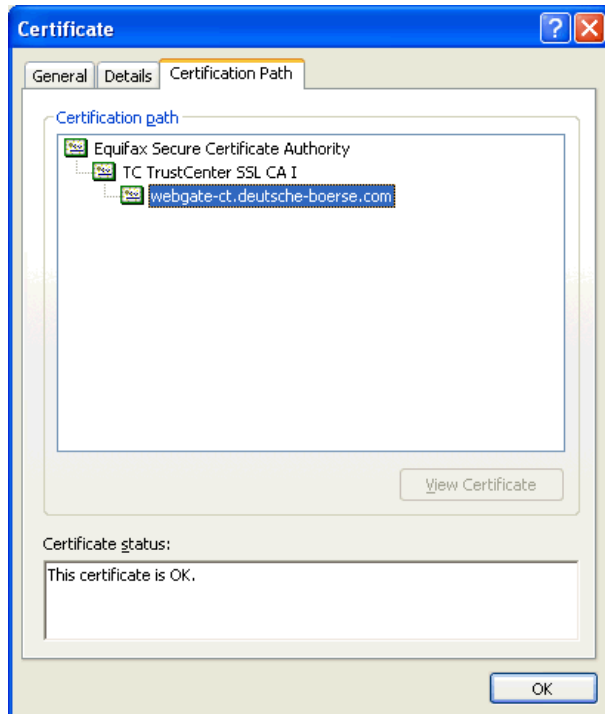
Right click in the browser window and select „Properties“. The following dialog will be opened:



Click the „Certificates“ button. The following dialog will be opened:



Change the tab to "Certification Path".



If this window shows different information, please contact your system administrator for help.

3 Troubleshooting

Symptom	Possible causes	Measure
ComTrader do not start over desktop link	Miscellaneous	<ul style="list-style-type: none"> Start ComTrader via the URLs described in chapter 0.
Java Plugin do not start, instead an .jnlp file is downloaded	Java Plugin not correctly installed	<ul style="list-style-type: none"> Verify Java Plugin version and installation according to section 2.1
Java Plugin starts, but immediately shows an error. ComTrader do not start.	Application can not be downloaded or saved.	<ul style="list-style-type: none"> Ensure that the download test (2.3) is successful. If necessary change the Java plugin proxy settings (2.2). Ensure that you have write access to the temporary cache location and the disk is not full. Ensure that the downloaded jar archive was not changed by an internal virus scanner.
ComTrader starts, but login is denied with error message „Could not connect WebGate“ in “Message Log” window.	Connection to WebGATE can not be established.	<ul style="list-style-type: none"> Check the settings in “WebConnect” part of login window. Ensure that the SSL connection test (2.4) is successful. If you encounter problems, please contact your system administrator. Check the security settings of the Java plugin (2.2).